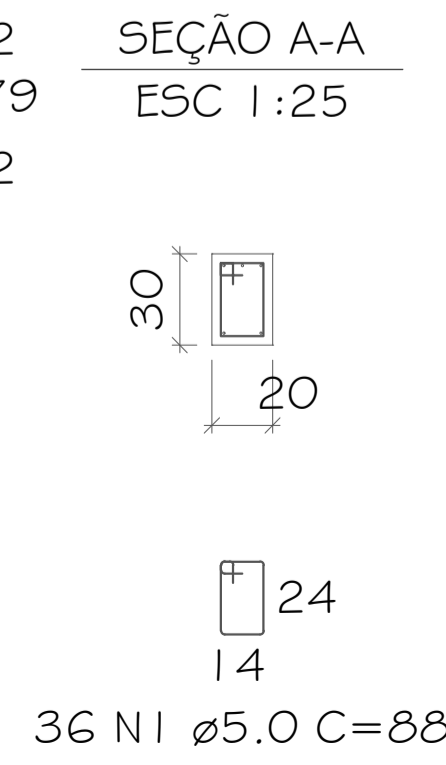
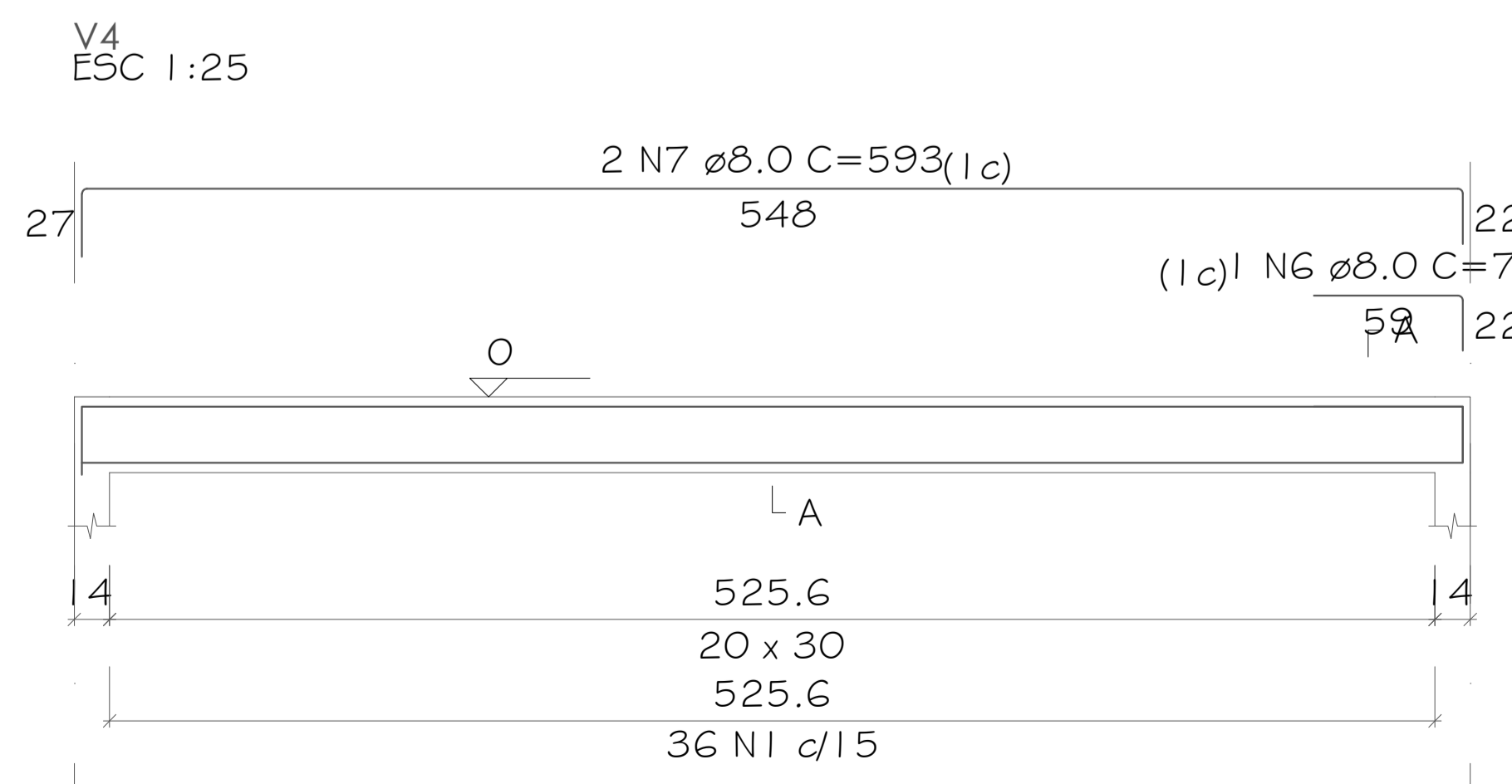
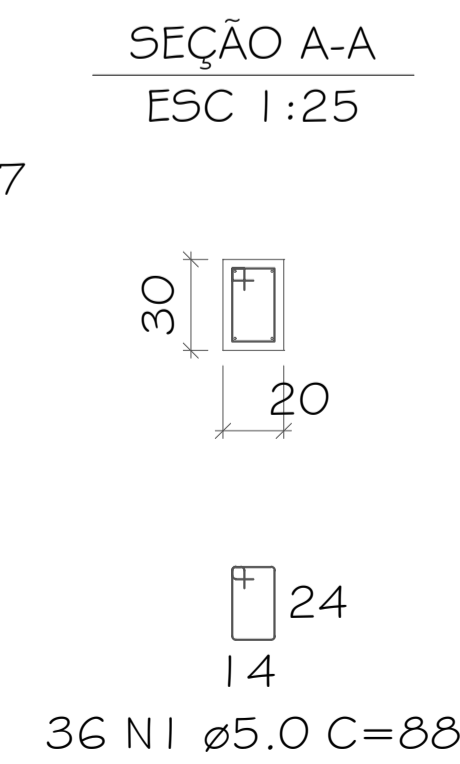
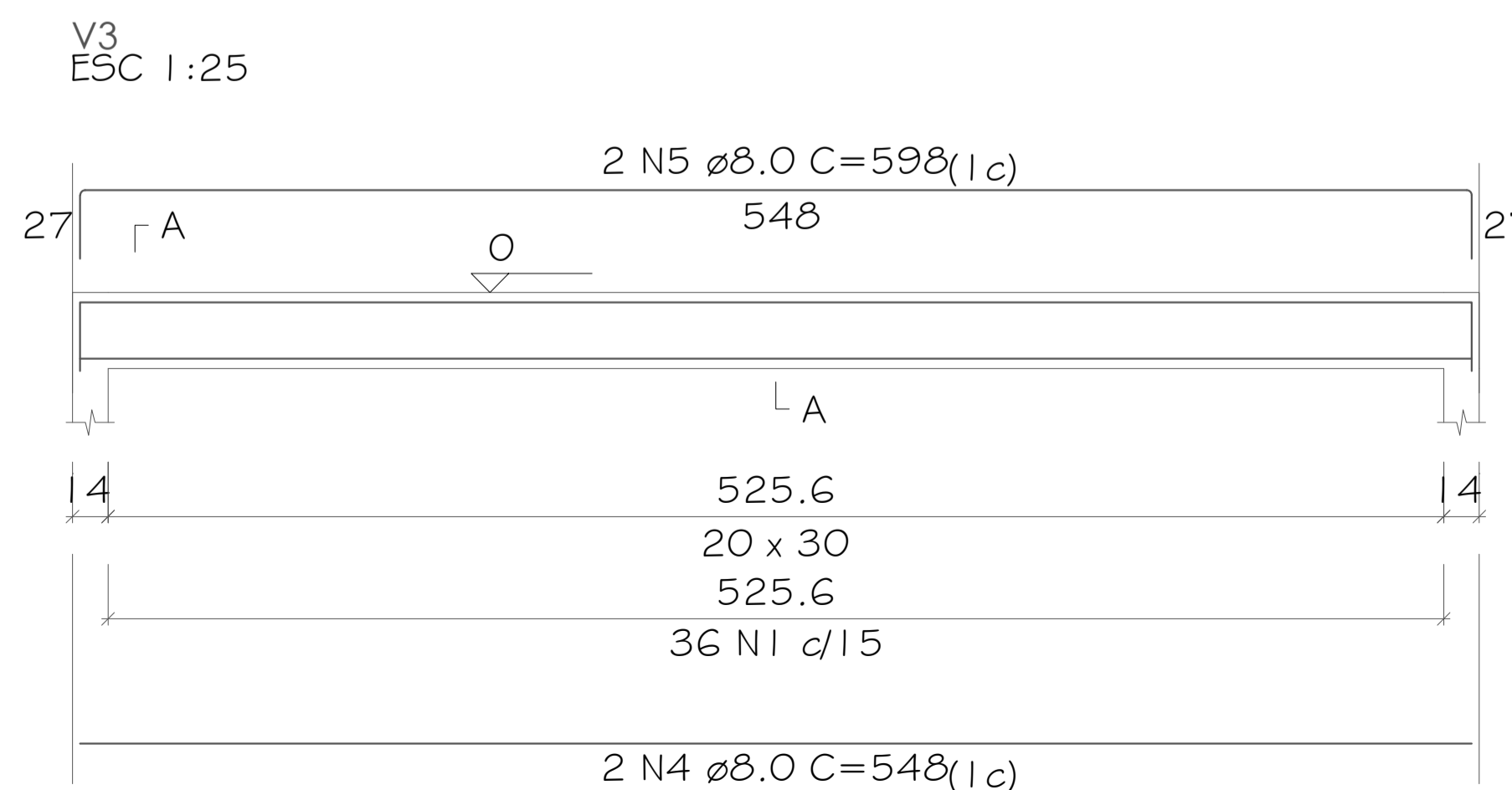
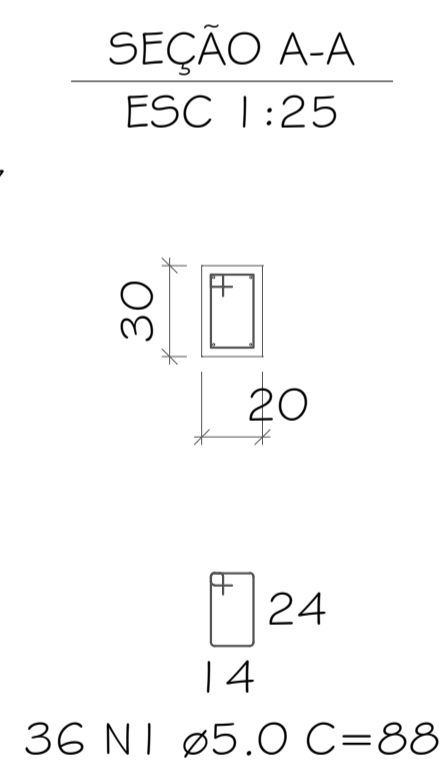
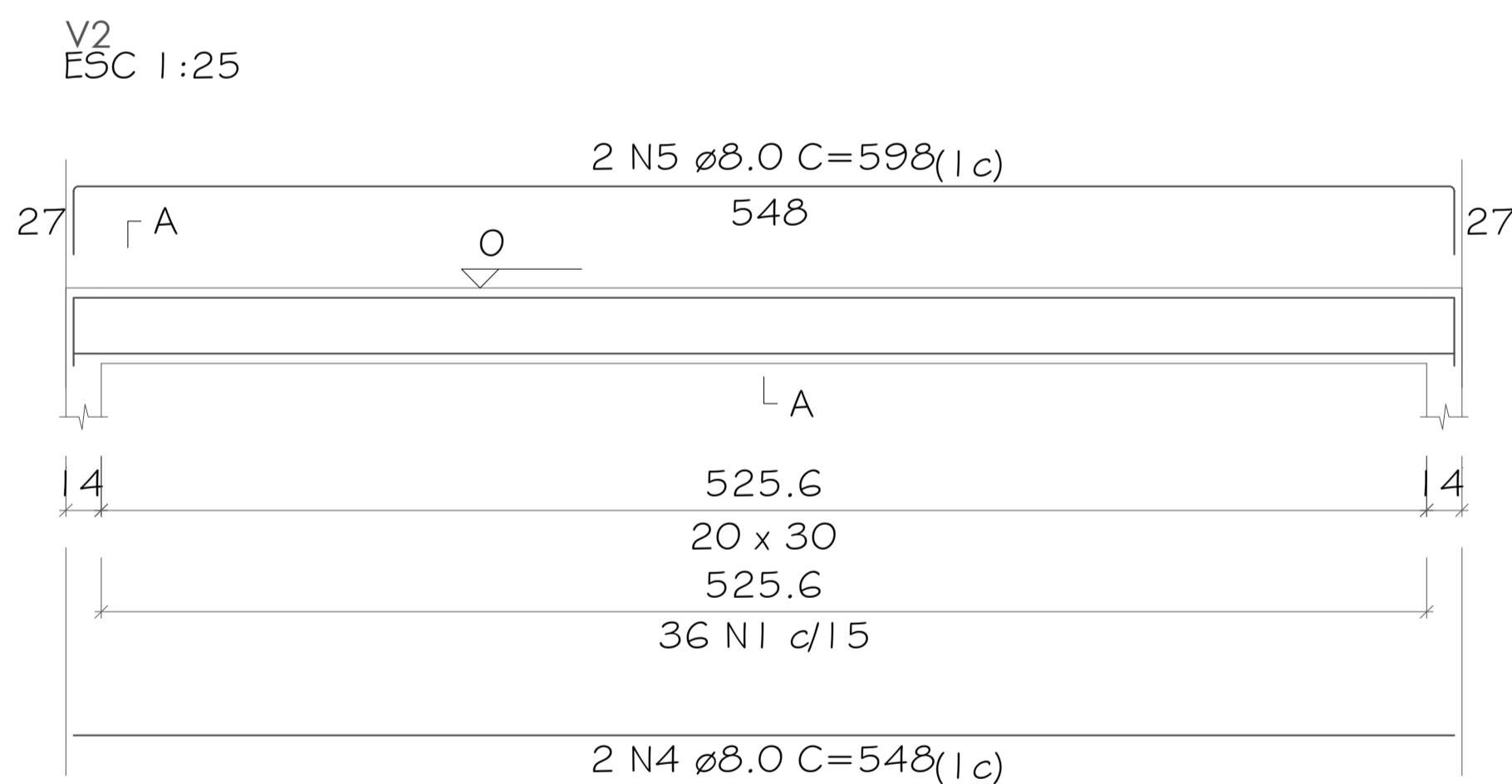
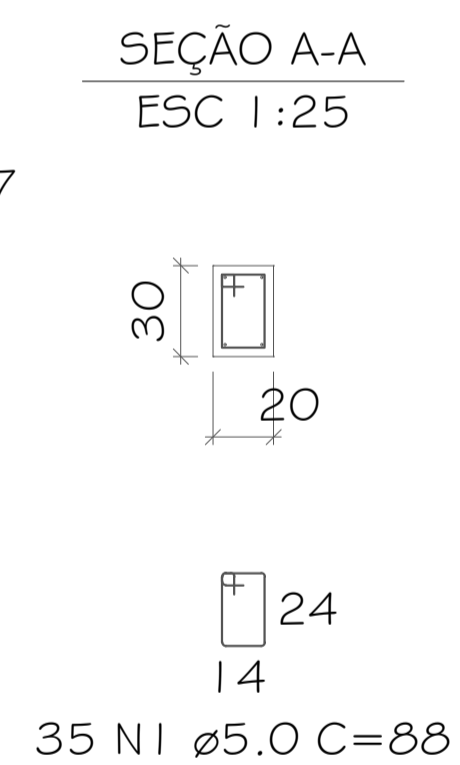
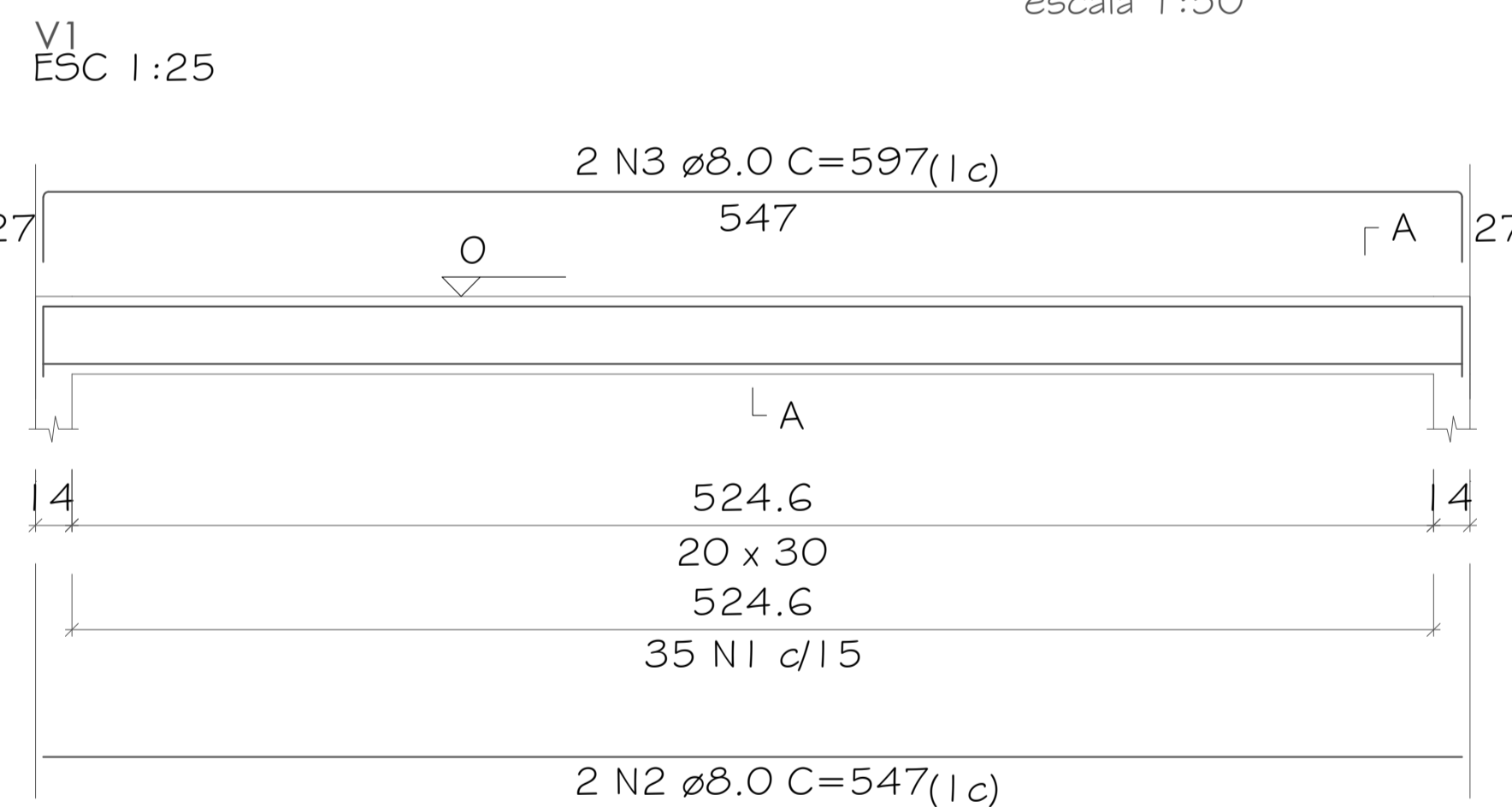


Vigas			
Nome	Seção (cm)	Elevação (cm)	Nível (cm)
V1	20x30	0	0
V2	20x30	0	0
V3	20x30	0	0
V4	20x30	0	0
V5	20x30	0	0
V6	20x30	0	0
V7	20x30	0	0
V8	20x30	0	0
V9	20x30	0	0
V10	20x30	0	0
V11	20x30	0	0
V12	20x30	0	0

Baldrame pavilhão existente (Nível 0)
escala 1:50



PROJETO
REFORMA E AMPLIAÇÃO PAVILHÃO L. CUTIA

LOCAL
Inferior - Linha Cutia, Novo Xingu/RS - CEP: 99687-000

RESPONSÁVEL TÉCNICO
Tays Lucia Remoniti
CREA/RS 247973

PROPRIETÁRIO
Prefeitura Municipal de Novo Xingu
04.207.526/0001-06

CONTEÚDO
Fôrma e vigas baldrames - Pavilhão existente

PROJETO
Estrutural

ÁREA
62,33m²

DATA
18/06/2024

FRANCHA
01 / 11

DIREITOS AUTORAIS RESERVADOS. LEI 9.610/98